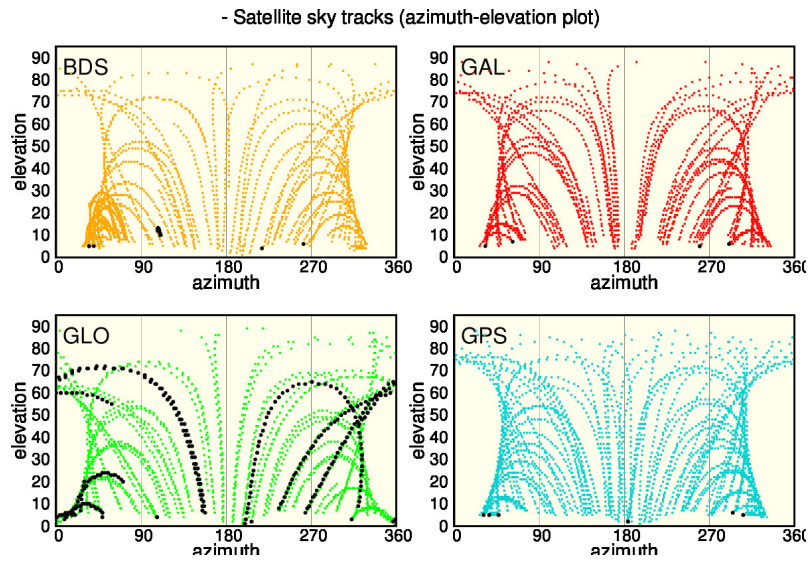


LEMZ Daily observation Quality Control for 2023/01/09 30s
plots

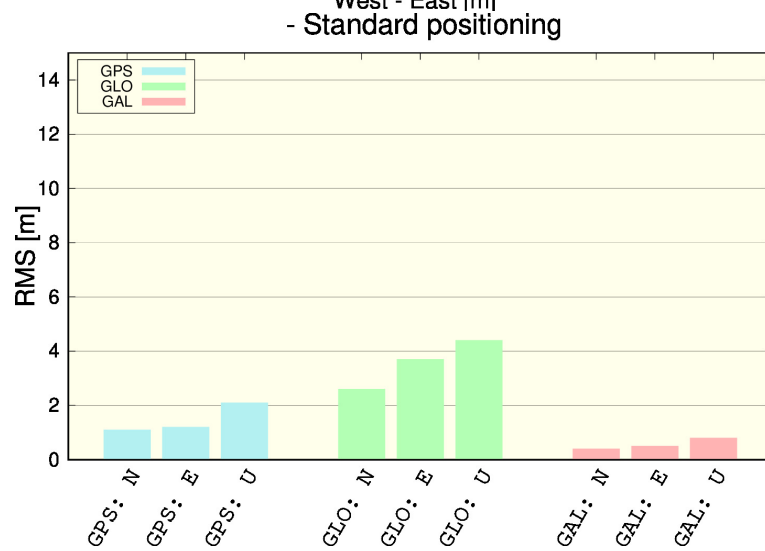
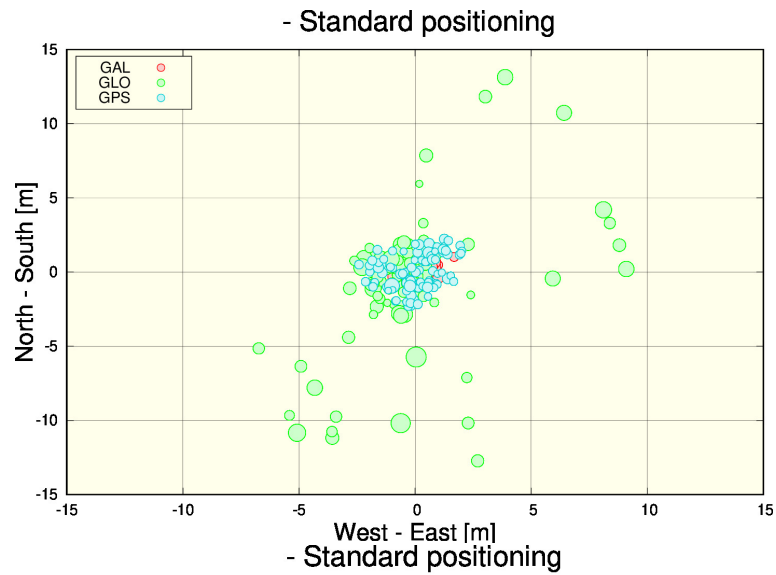
ARANZADI (Department of Applied Geodesy)

Prepared on 2023-01-11 18:00:46

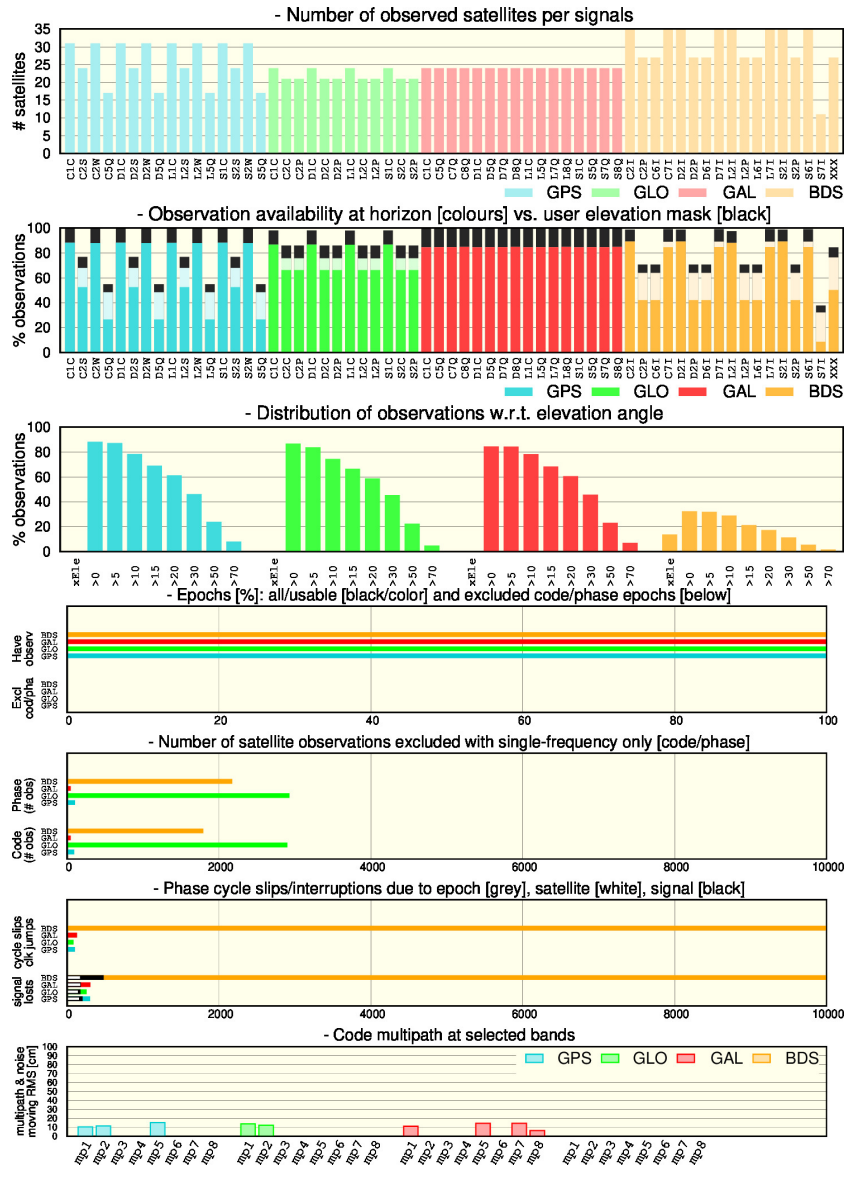
1 Tracked satellites



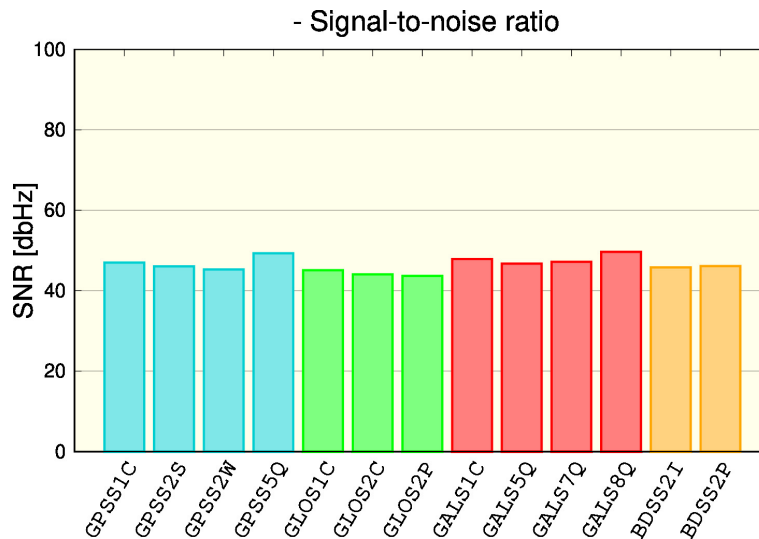
2 Standard Positioning



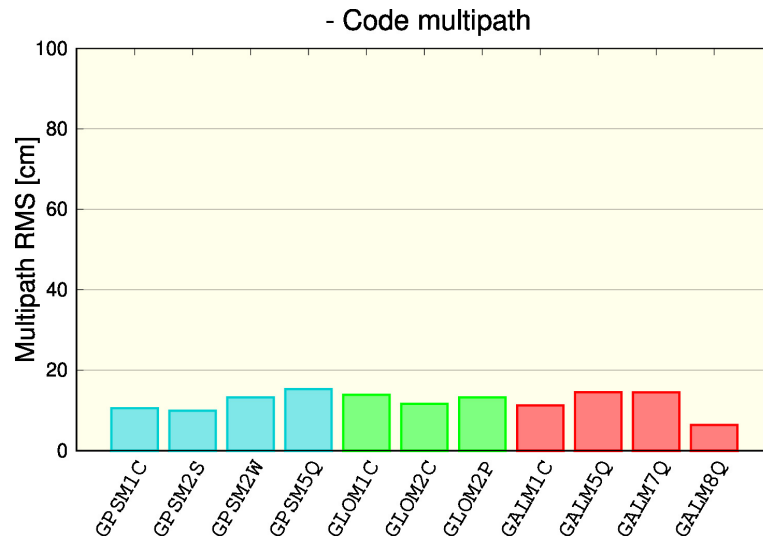
3 Observations



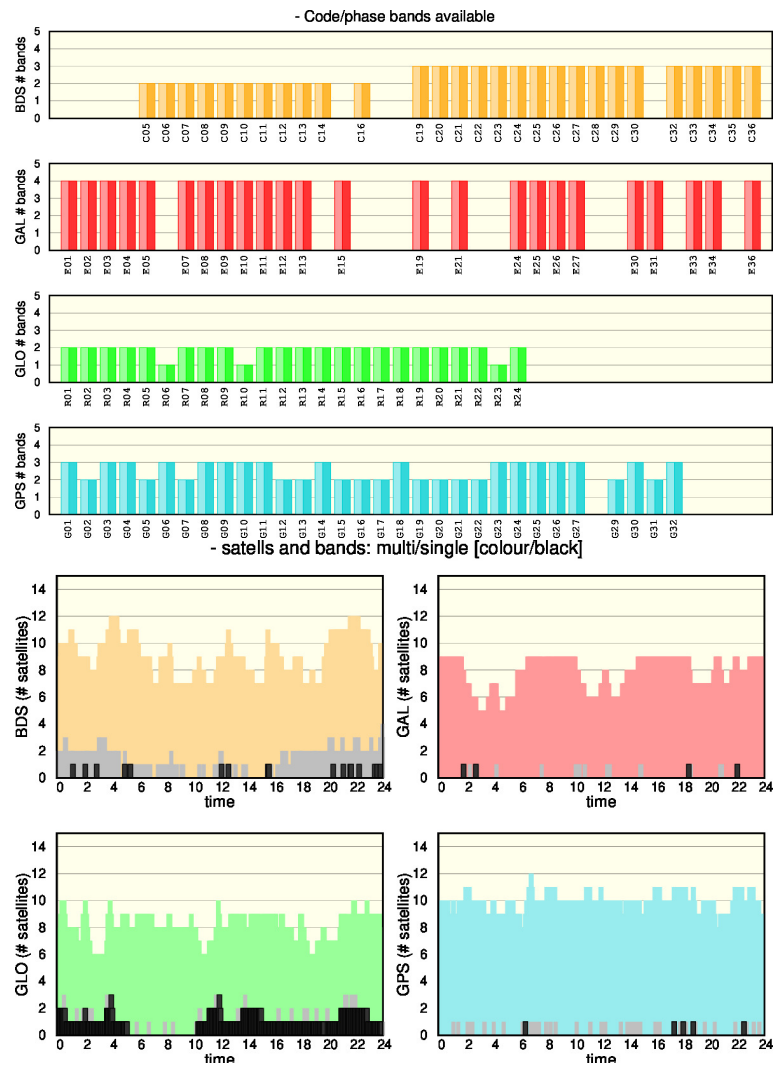
4 Signal to Noise Ratio (SNR)



5 Code multipath



6 Tracked signals



7 Plots for each Satellite and System

