

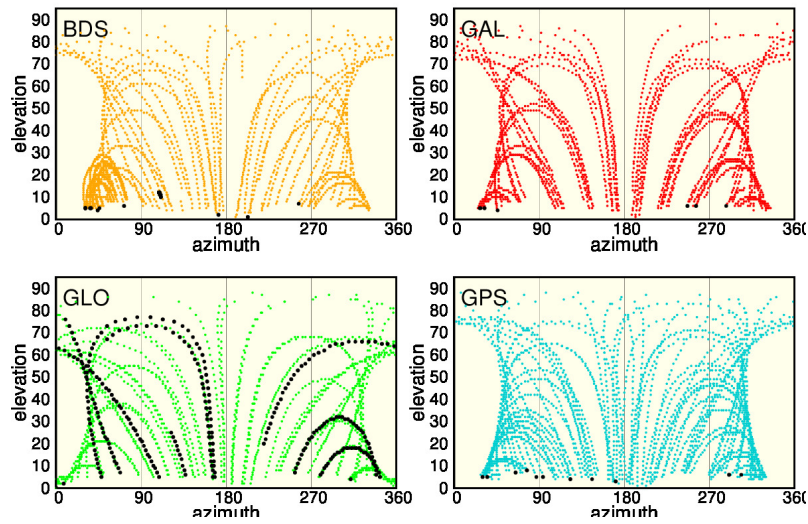
LEMZ Daily observation Quality Control for 2022/06/11 30s  
plots

ARANZADI (Department of Applied Geodesy)

Prepared on 2022-06-13 16:11:23

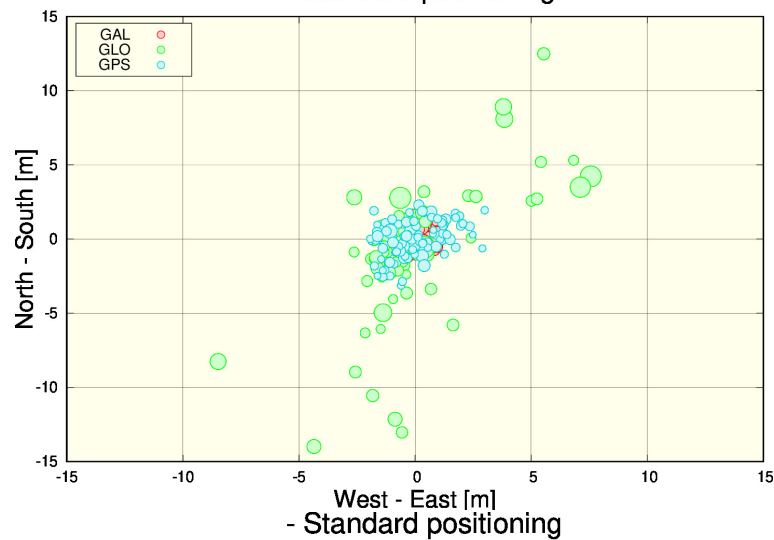
# 1 Tracked satellites

- Satellite sky tracks (azimuth-elevation plot)

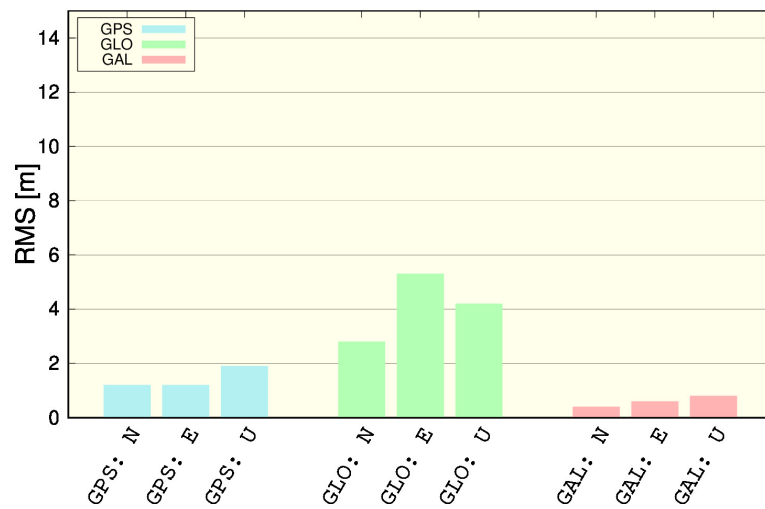


# 2 Standard Positioning

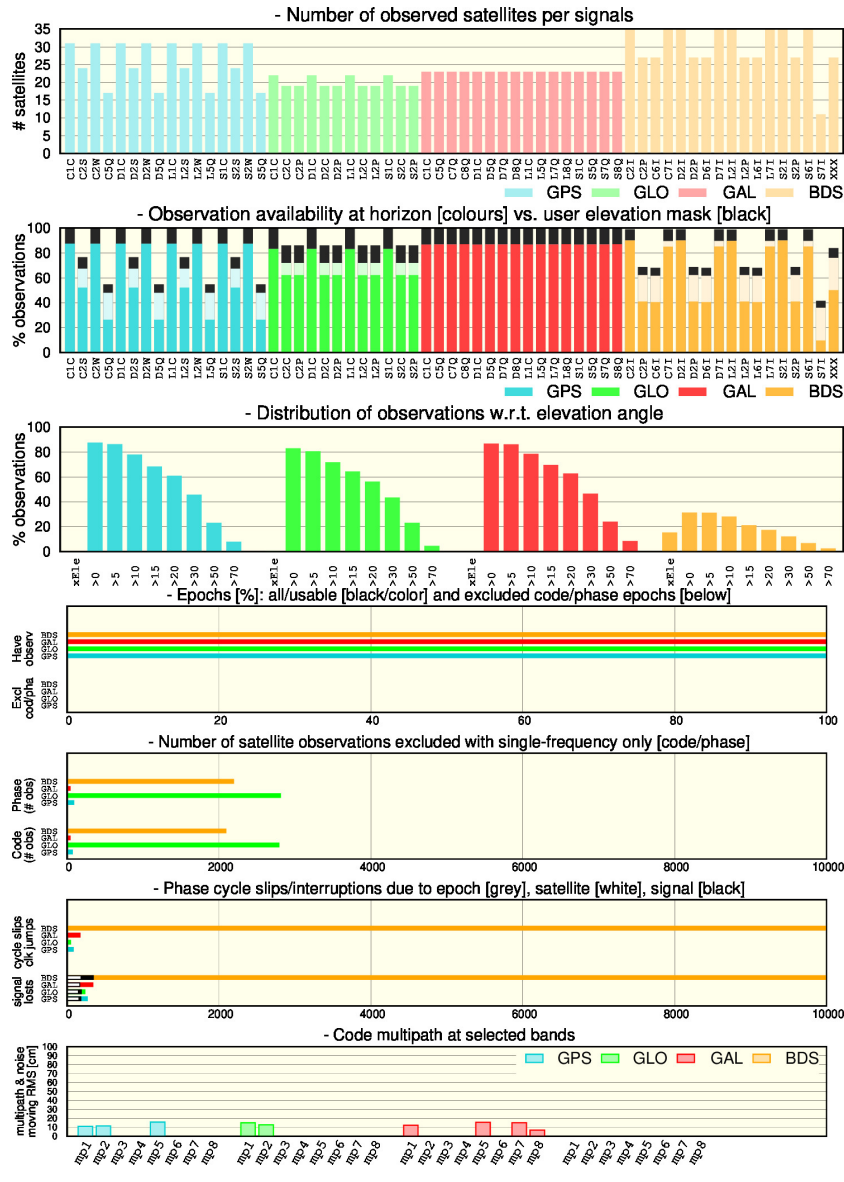
- Standard positioning



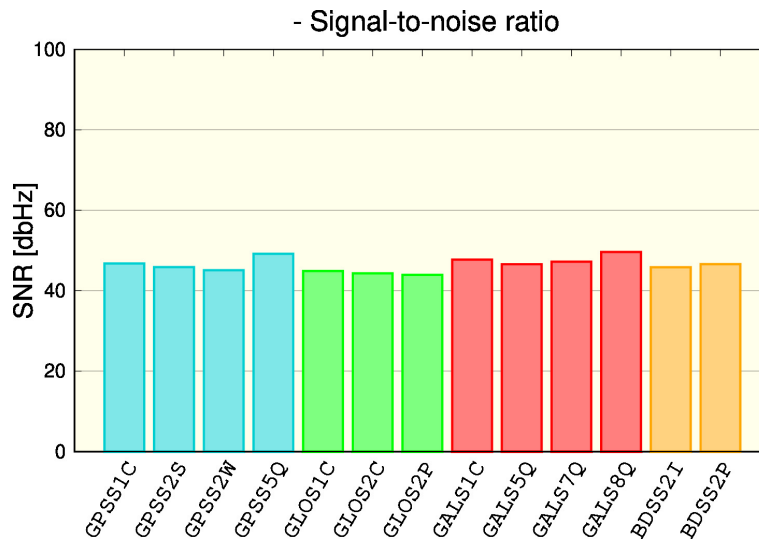
- Standard positioning



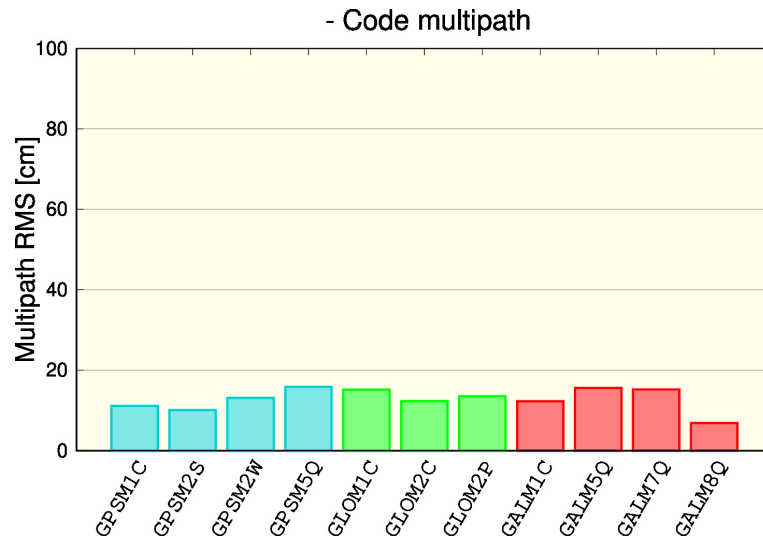
### 3 Observations



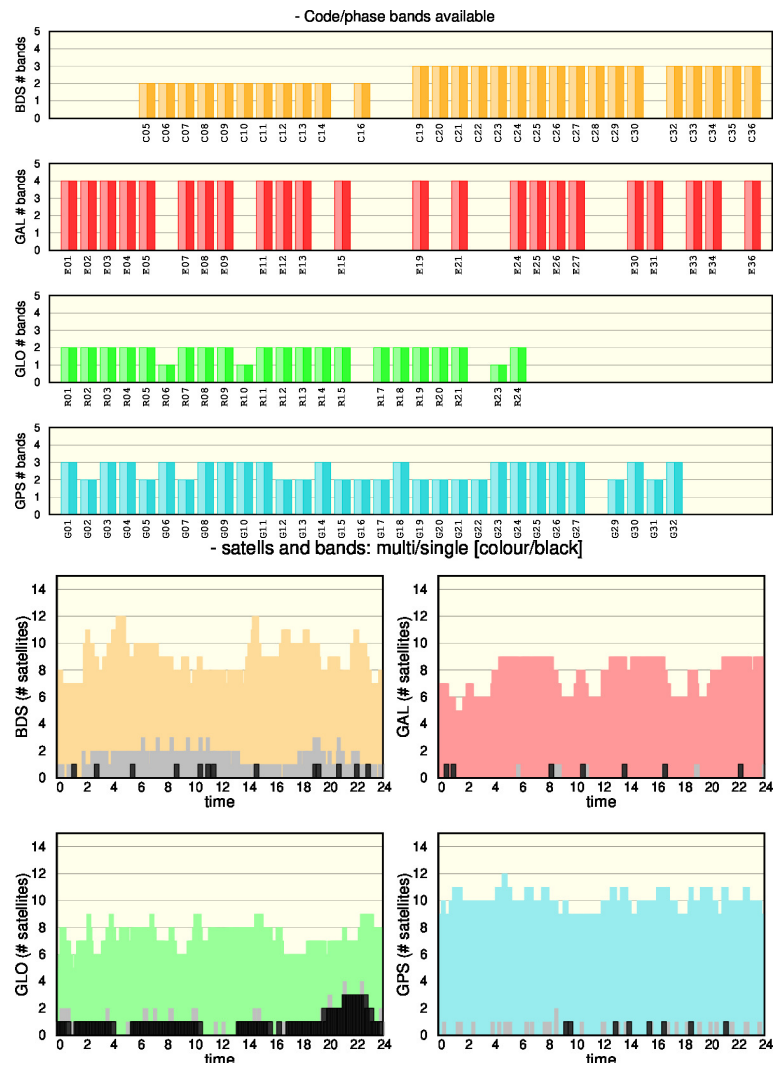
### 4 Signal to Noise Ratio (SNR)



## 5 Code multipath



## 6 Tracked signals



# 7 Plots for each Satellite and System

