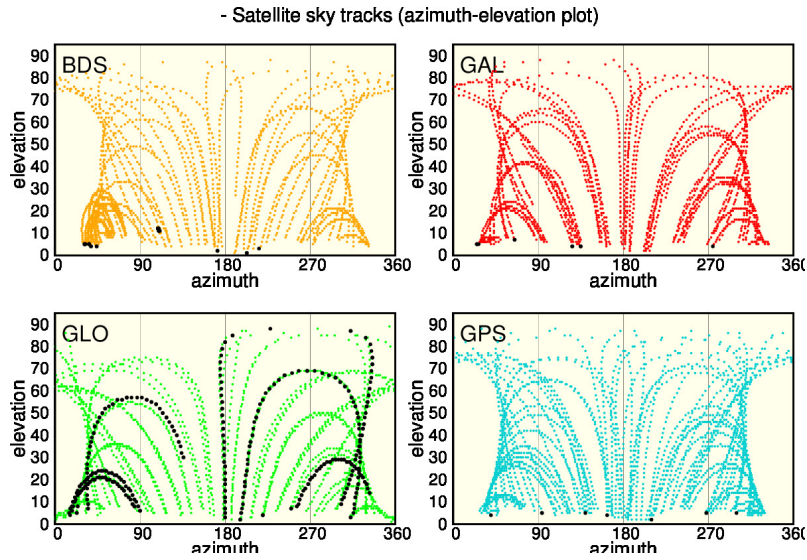


LEMZ Daily observation Quality Control for 2022/05/21 30s  
plots

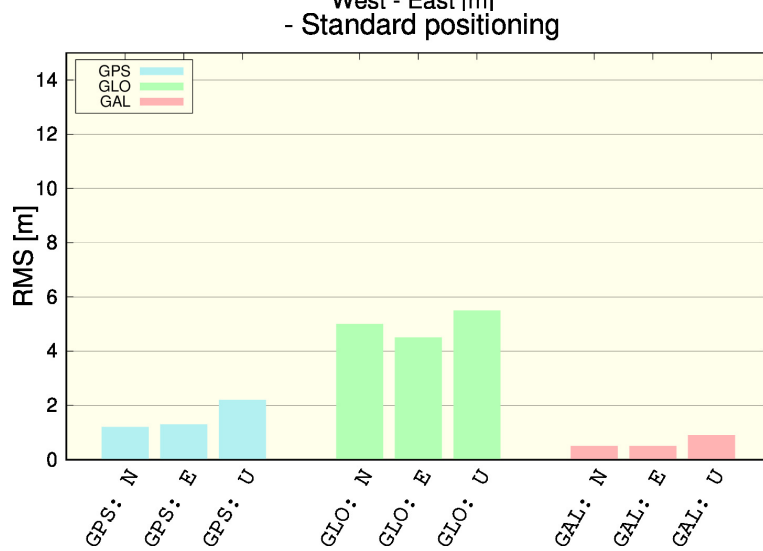
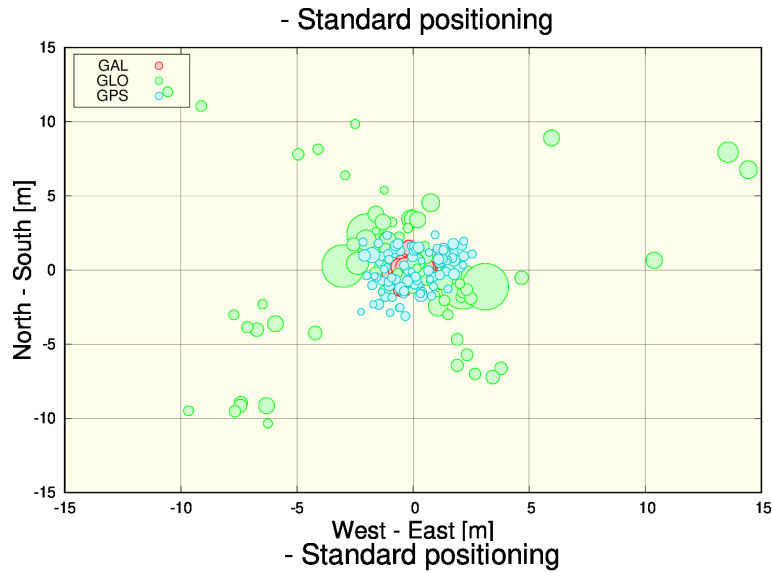
ARANZADI (Department of Applied Geodesy)

Prepared on 2022-05-23 16:26:14

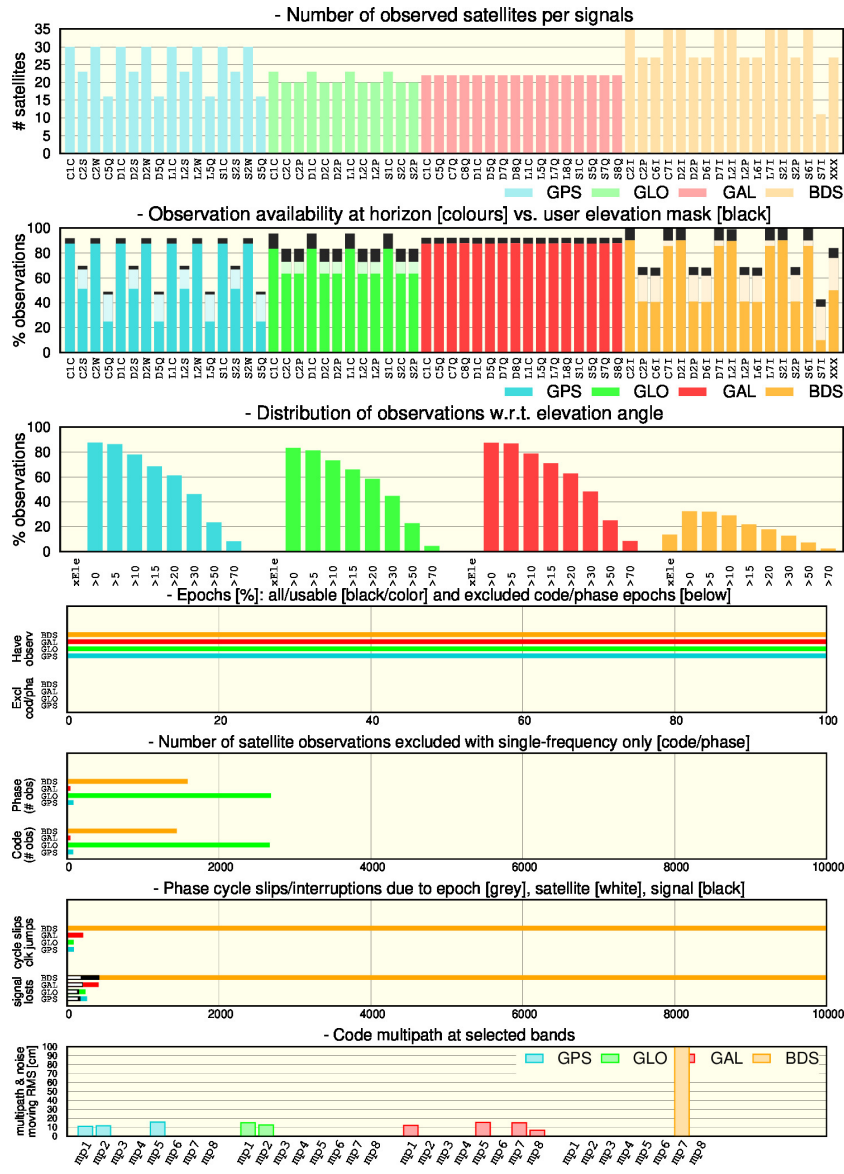
# 1 Tracked satellites



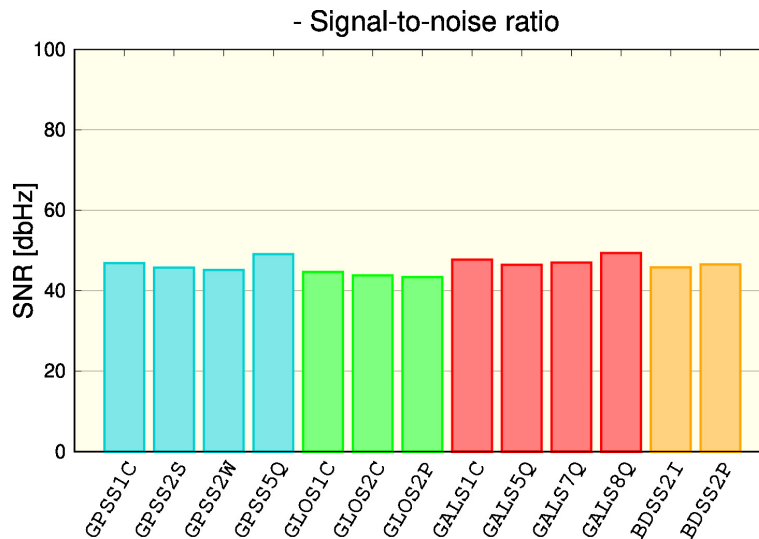
# 2 Standard Positioning



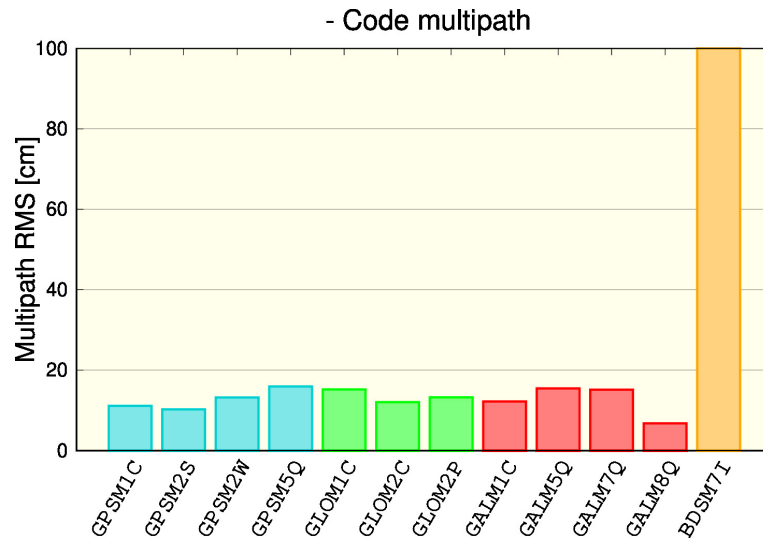
### 3 Observations



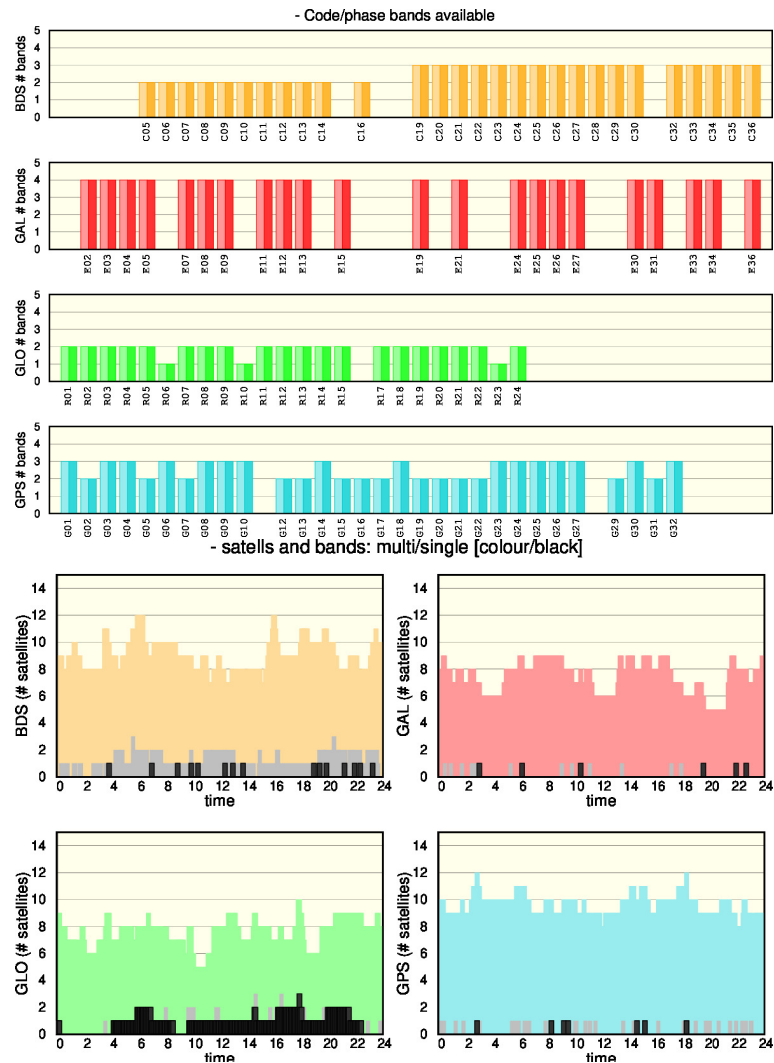
### 4 Signal to Noise Ratio (SNR)



## 5 Code multipath



## 6 Tracked signals



## 7 Plots for each Satellite and System

