

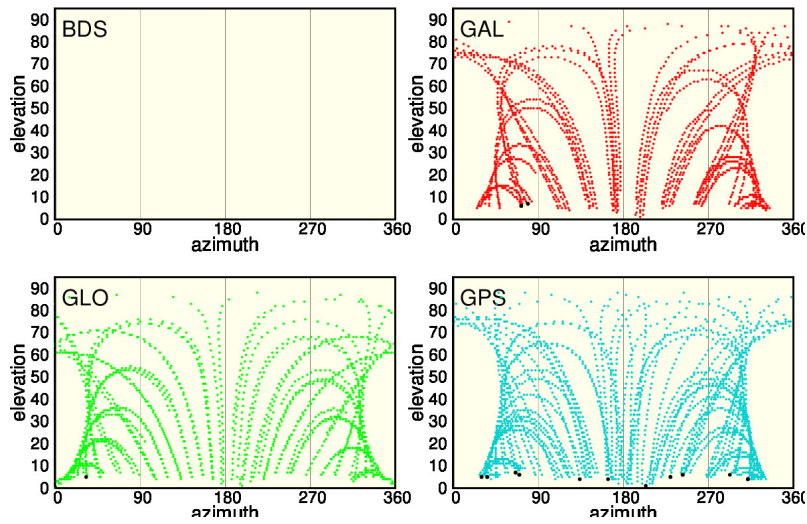
LEMZ Daily observation Quality Control for 2022/04/30 30s
plots

ARANZADI (Department of Applied Geodesy)

Prepared on 2022-05-02 16:13:12

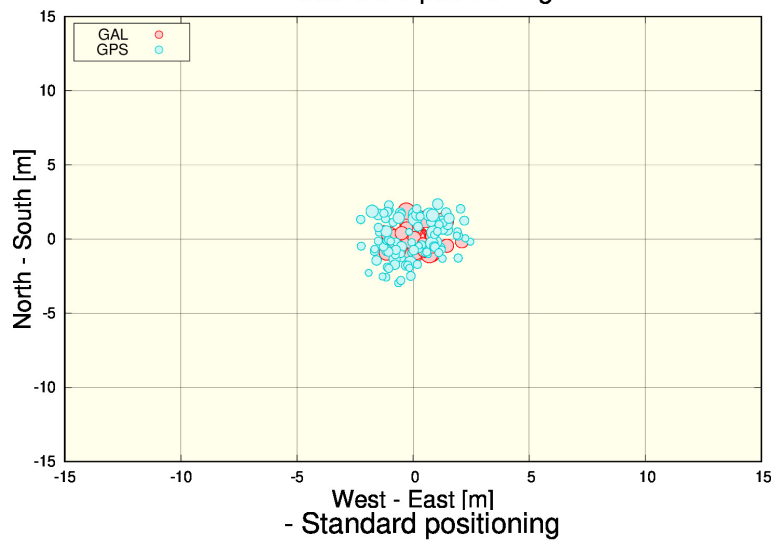
1 Tracked satellites

- Satellite sky tracks (azimuth-elevation plot)

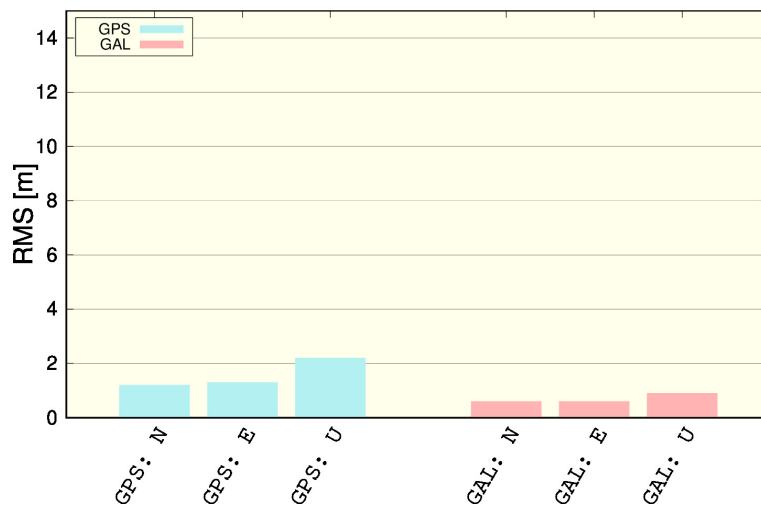


2 Standard Positioning

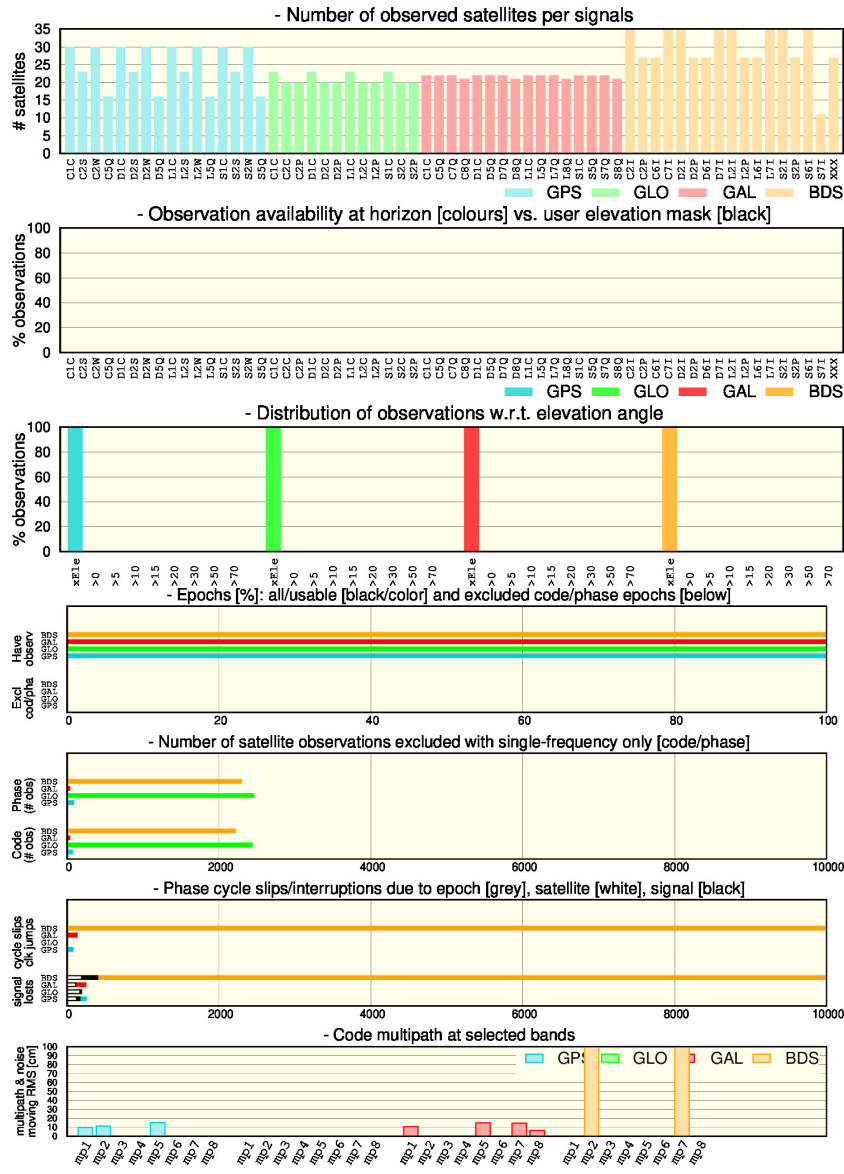
- Standard positioning



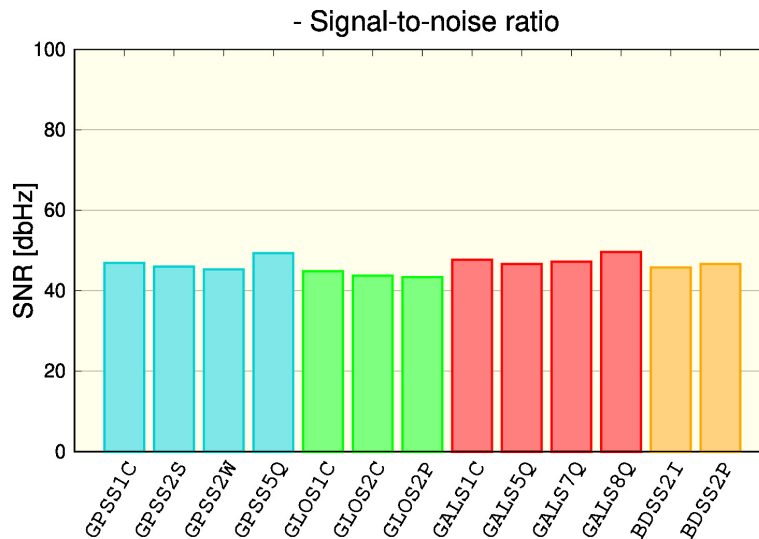
- Standard positioning



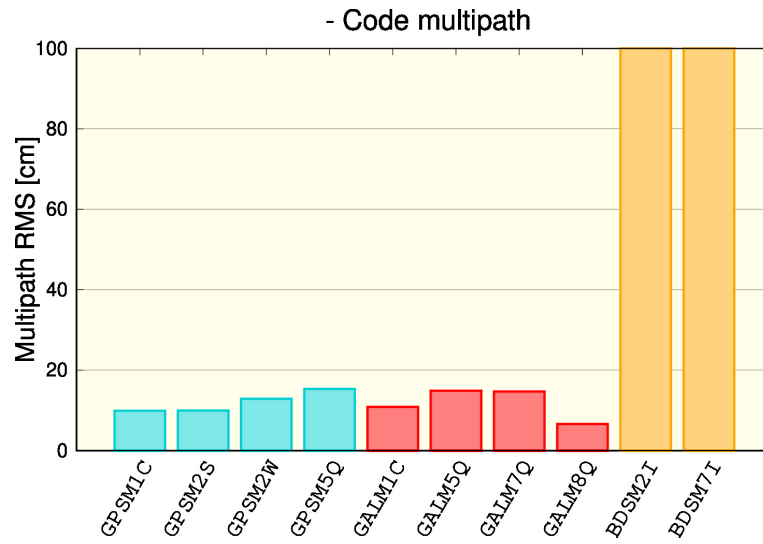
3 Observations



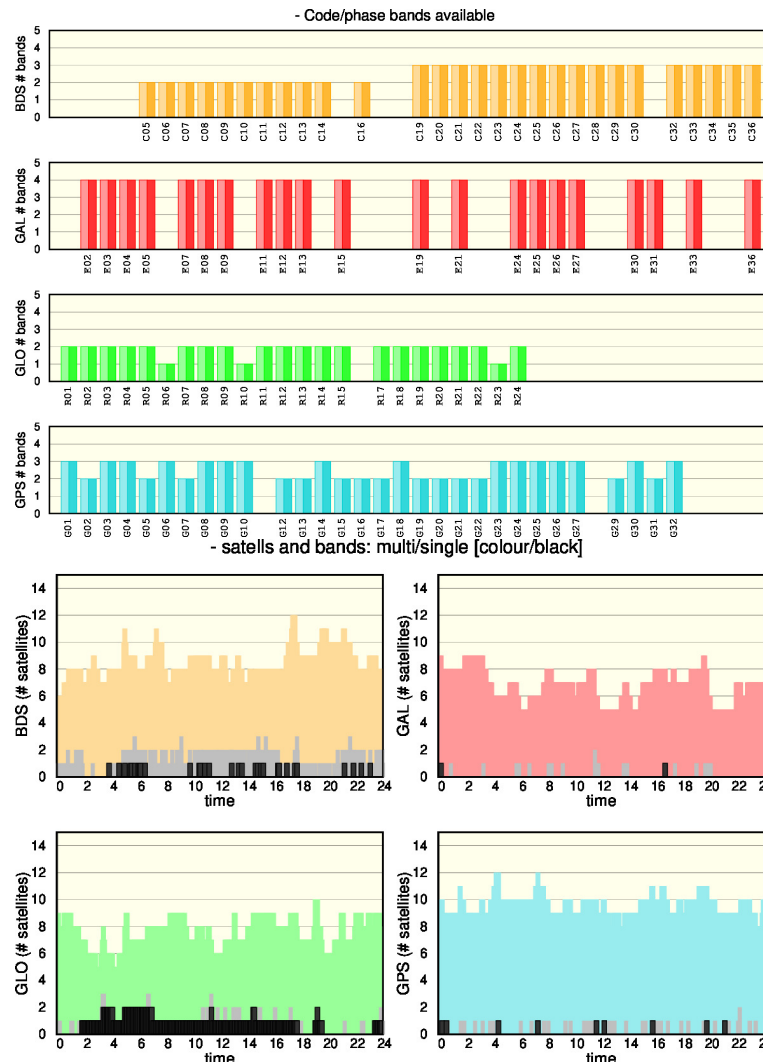
4 Signal to Noise Ratio (SNR)



5 Code multipath



6 Tracked signals



7 Plots for each Satellite and System

