

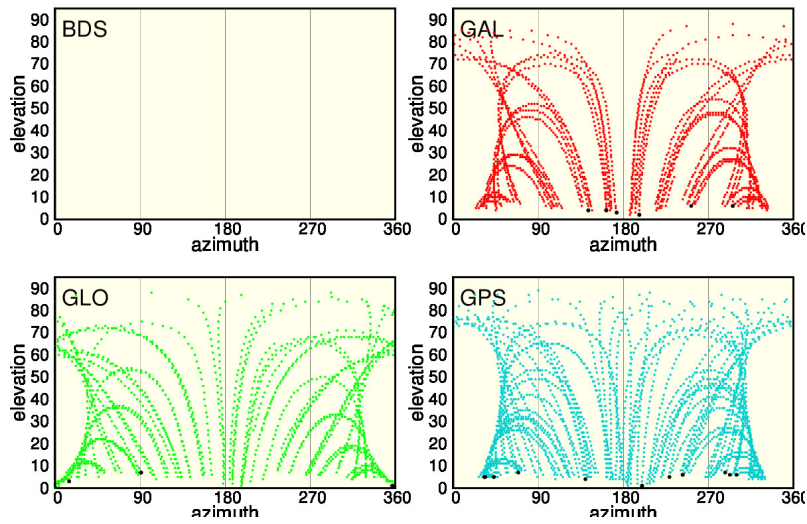
LEMZ Daily observation Quality Control for 2022/04/02 30s  
plots

ARANZADI (Department of Applied Geodesy)

Prepared on 2022-04-04 16:23:44

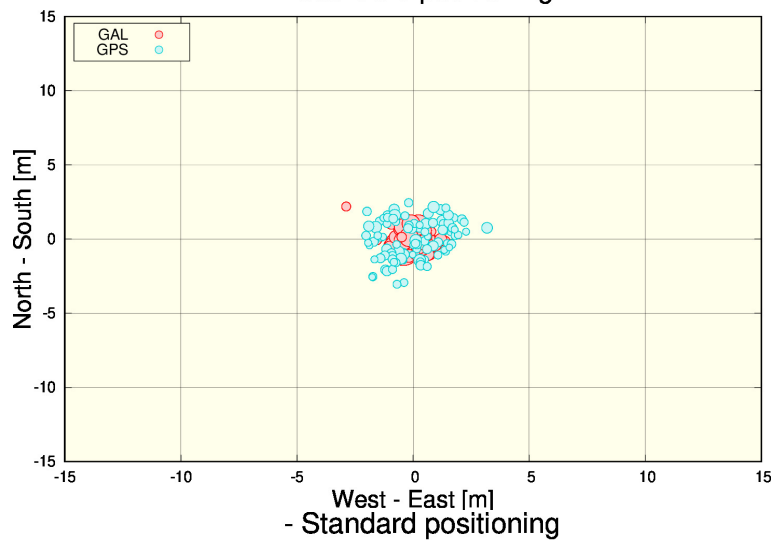
# 1 Tracked satellites

- Satellite sky tracks (azimuth-elevation plot)

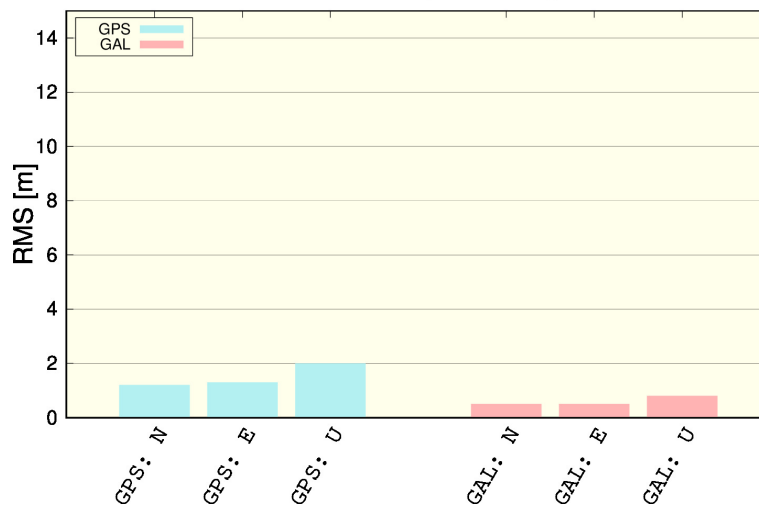


# 2 Standard Positioning

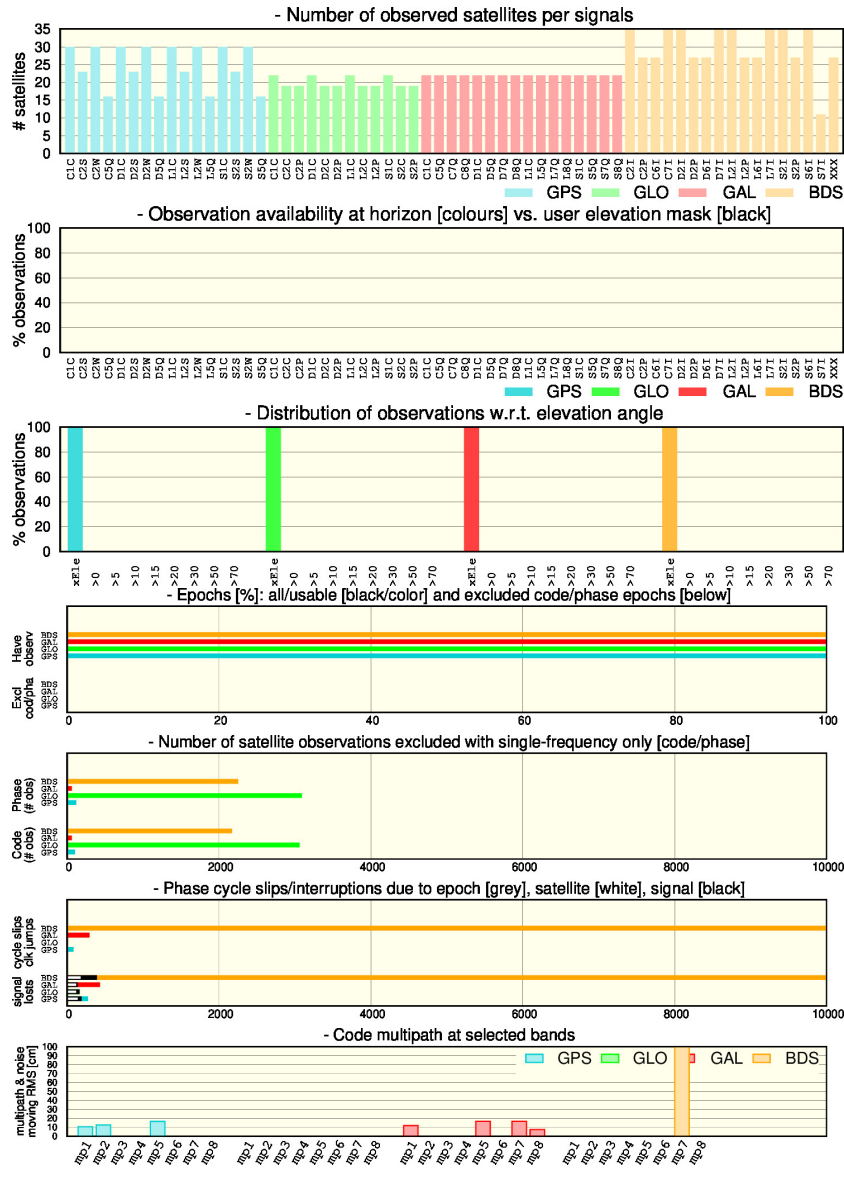
- Standard positioning



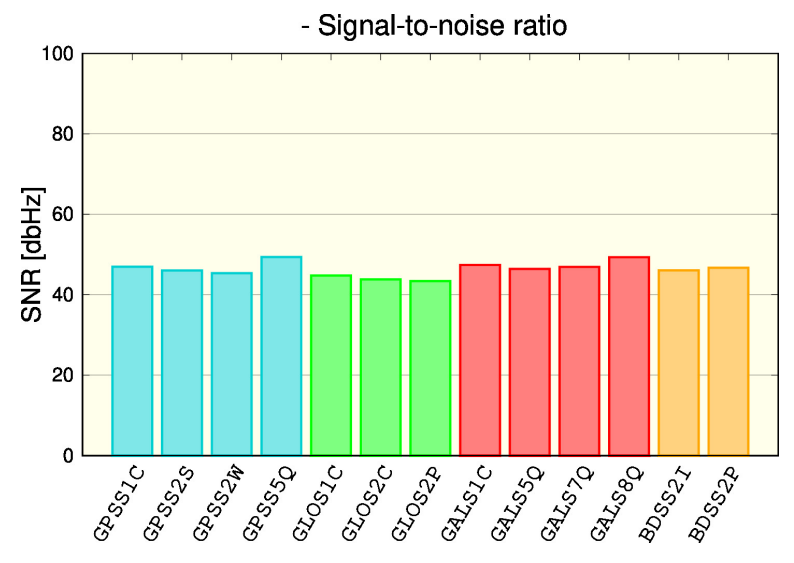
- Standard positioning



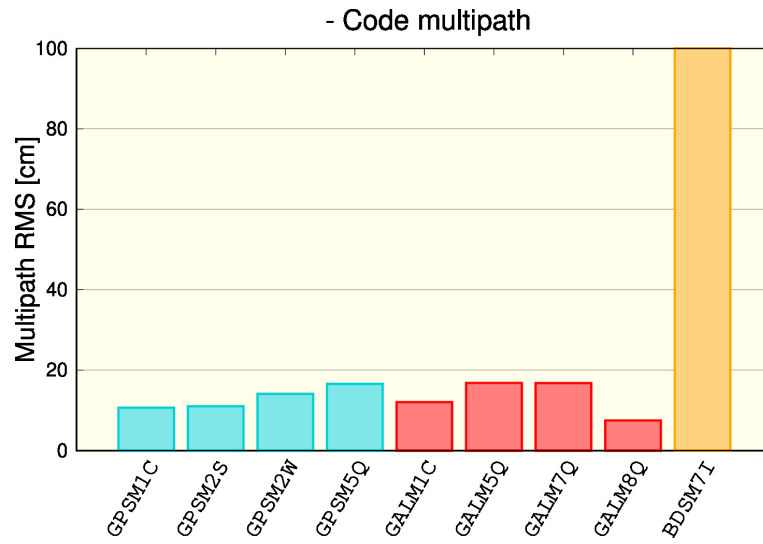
### 3 Observations



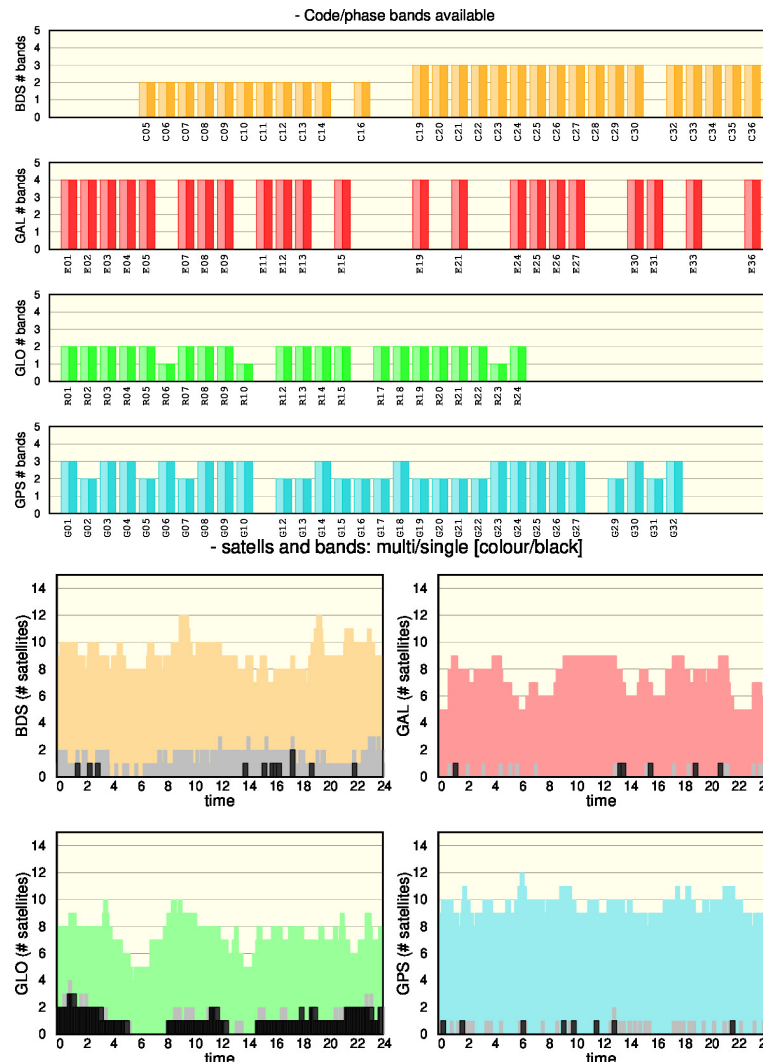
### 4 Signal to Noise Ratio (SNR)



## 5 Code multipath



## 6 Tracked signals





## 7 Plots for each Satellite and System

