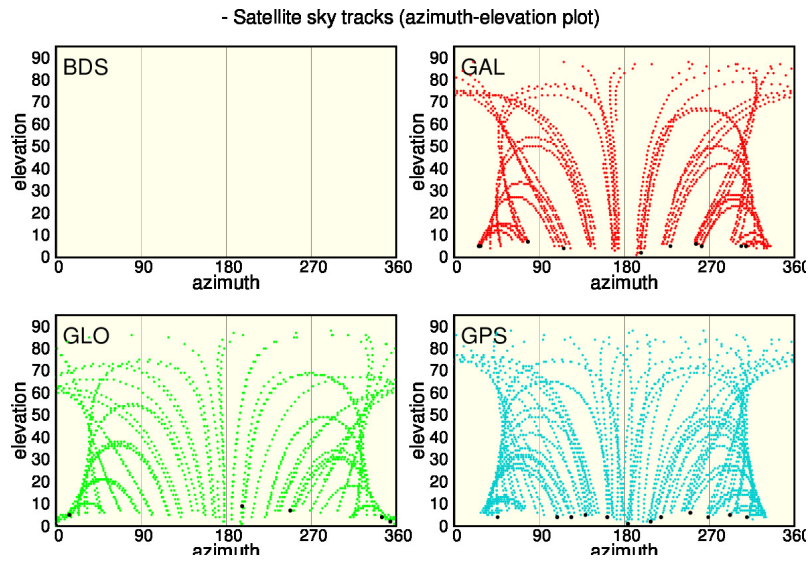


LEMZ Daily observation Quality Control for 2022/03/31 30s  
plots

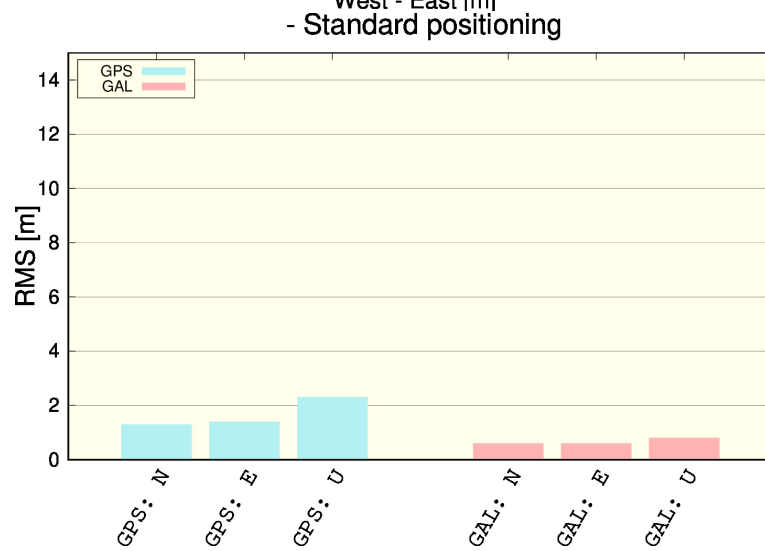
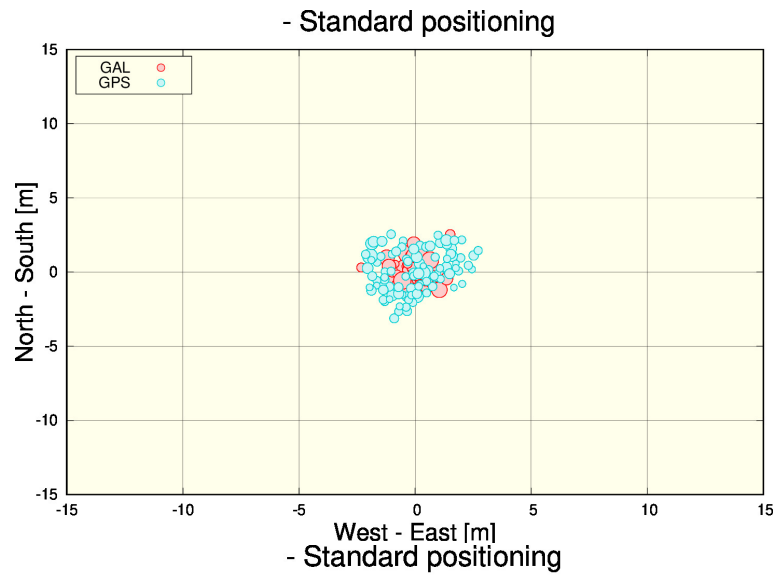
ARANZADI (Department of Applied Geodesy)

Prepared on 2022-04-02 17:54:20

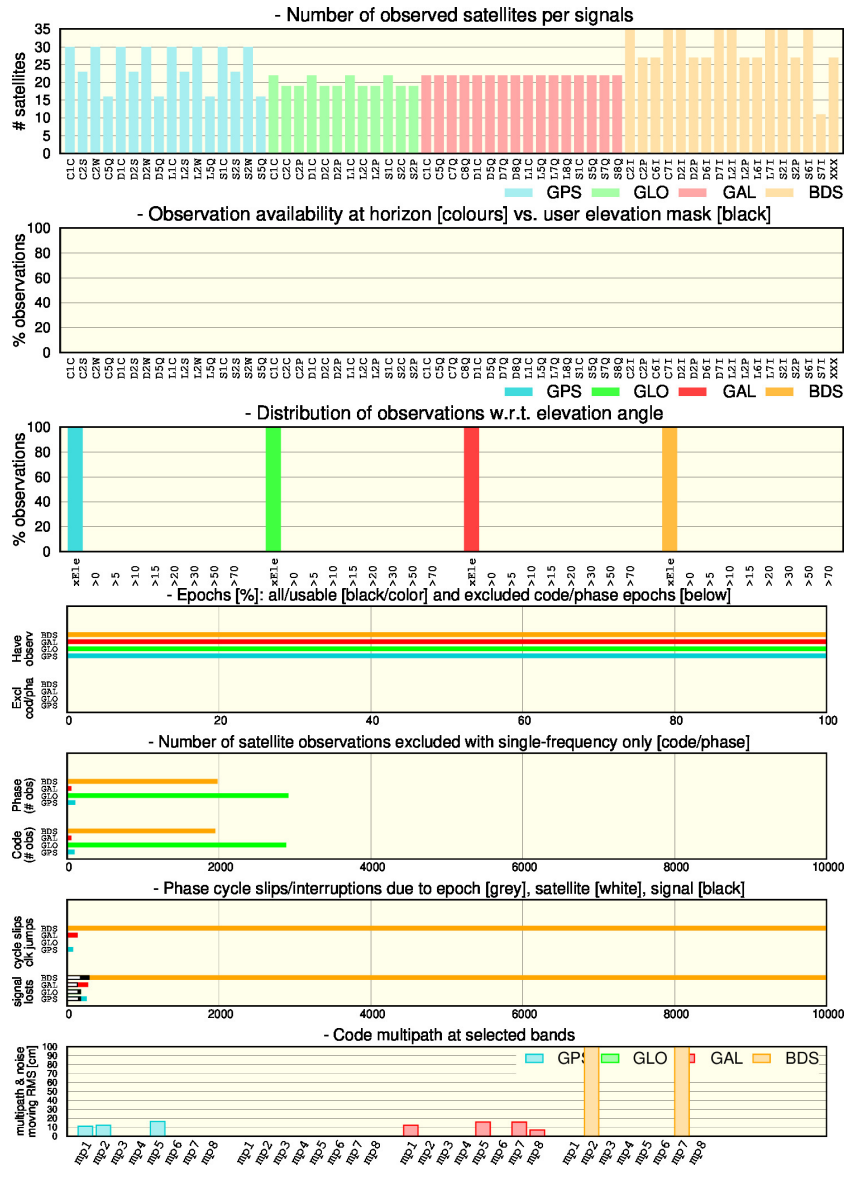
# 1 Tracked satellites



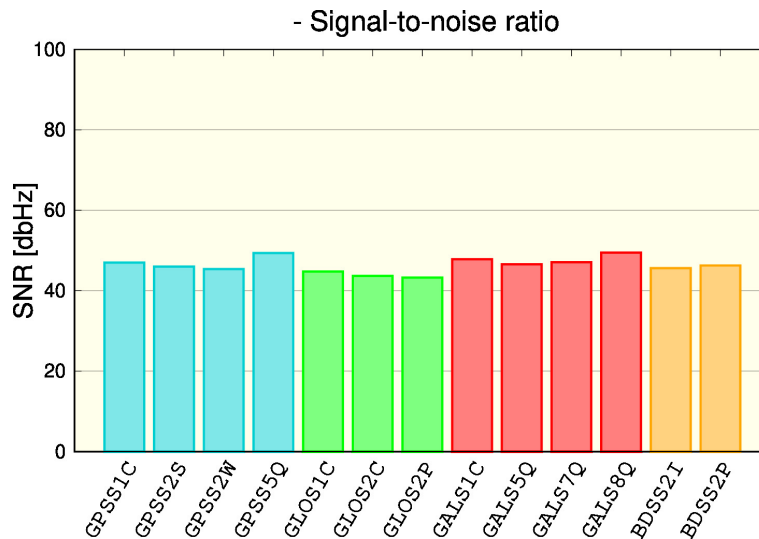
# 2 Standard Positioning



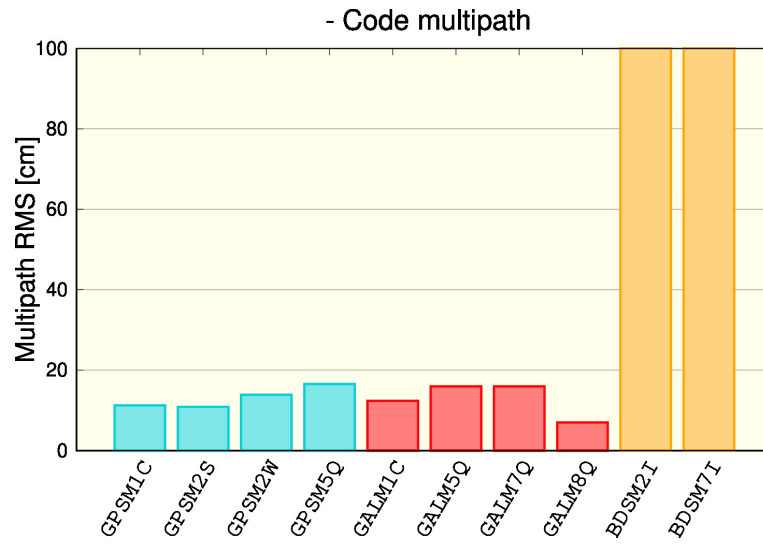
### 3 Observations



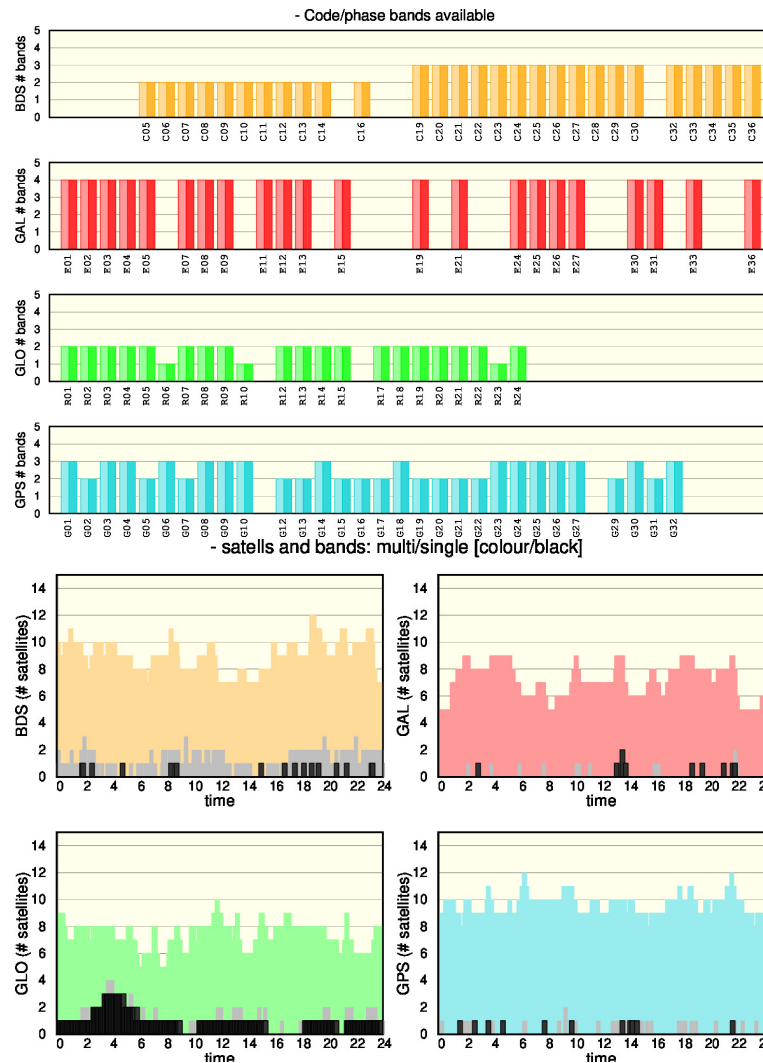
### 4 Signal to Noise Ratio (SNR)



## 5 Code multipath



## 6 Tracked signals



# 7 Plots for each Satellite and System

