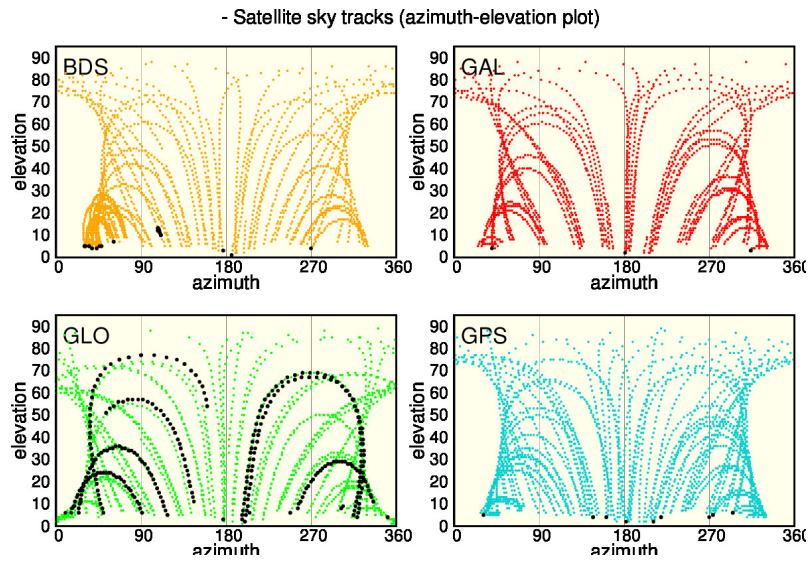


LEMZ Daily observation Quality Control for 2022/01/29 30s
plots

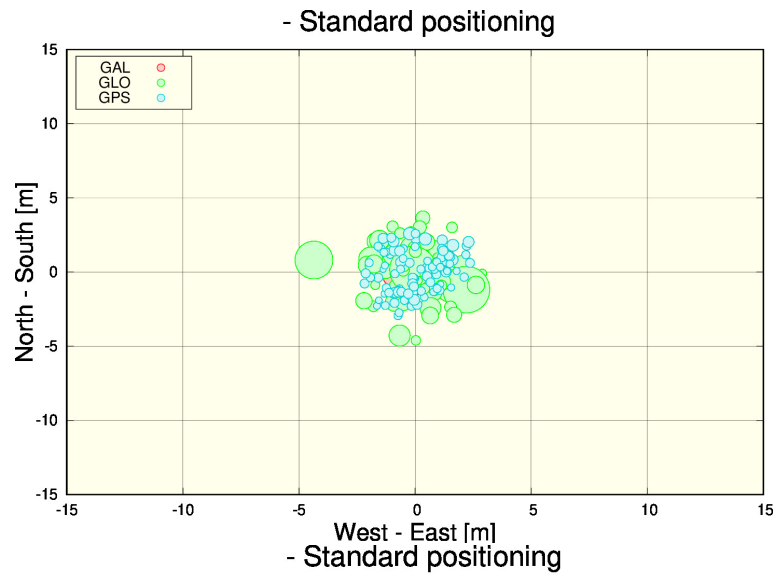
ARANZADI (Department of Applied Geodesy)

Prepared on 2022-01-31 16:03:04

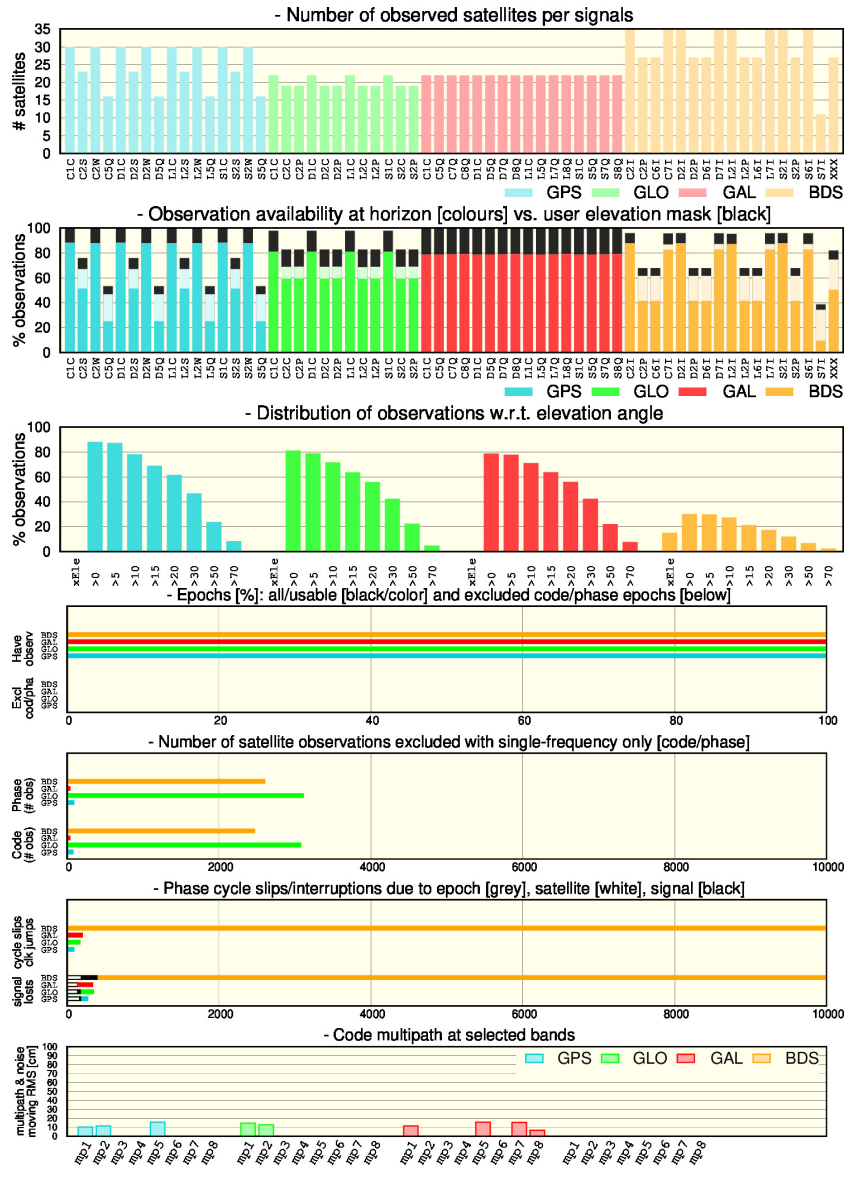
1 Tracked satellites



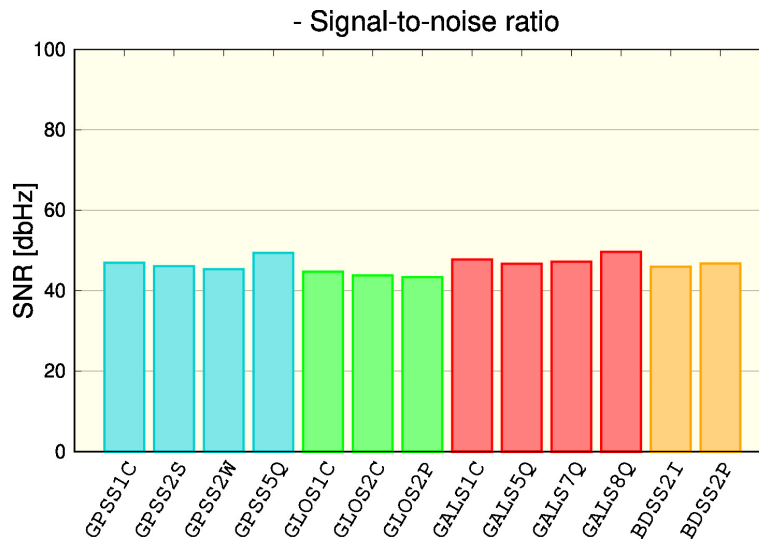
2 Standard Positioning



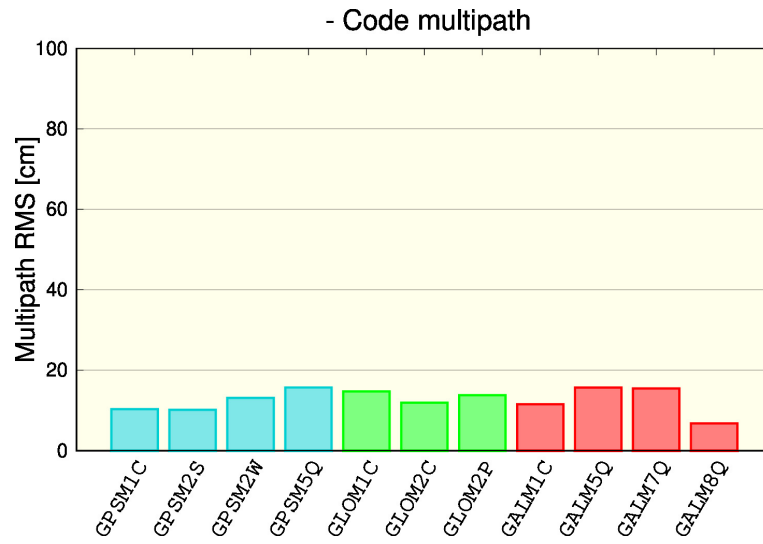
3 Observations



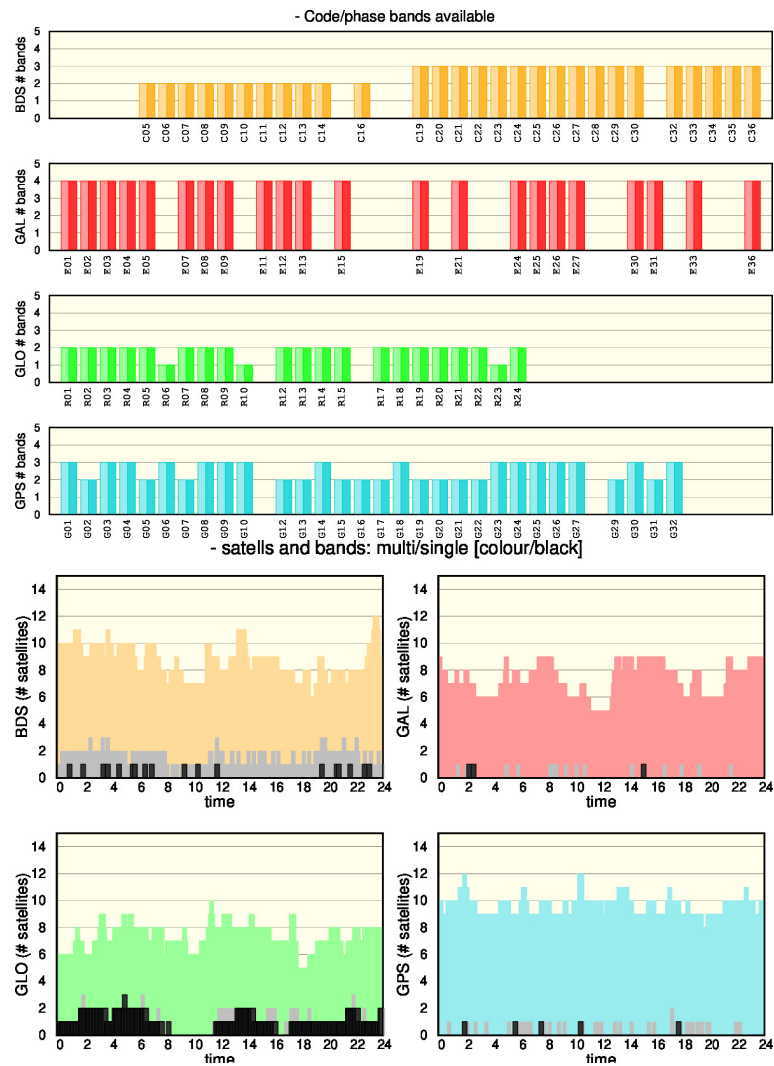
4 Signal to Noise Ratio (SNR)



5 Code multipath



6 Tracked signals



7 Plots for each Satellite and System

